



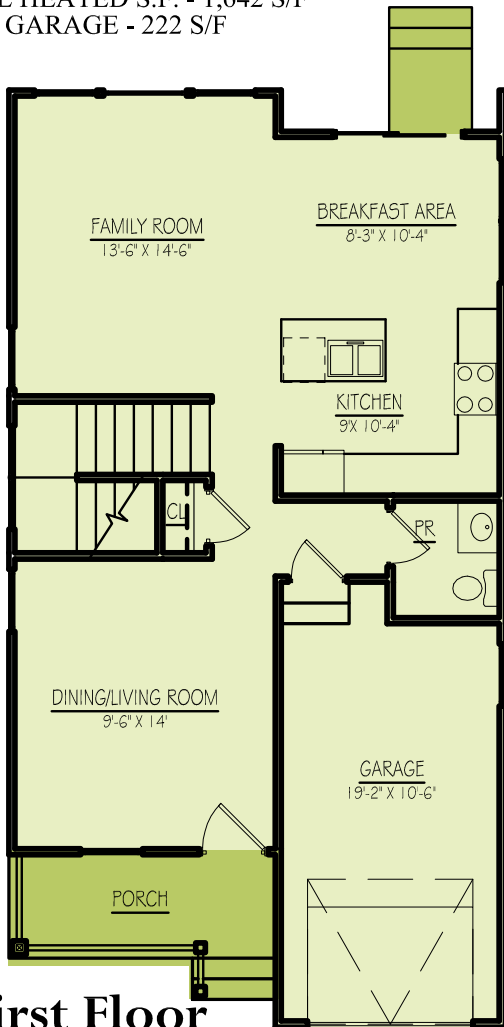
The Kensington

Carriage Hill LANDING

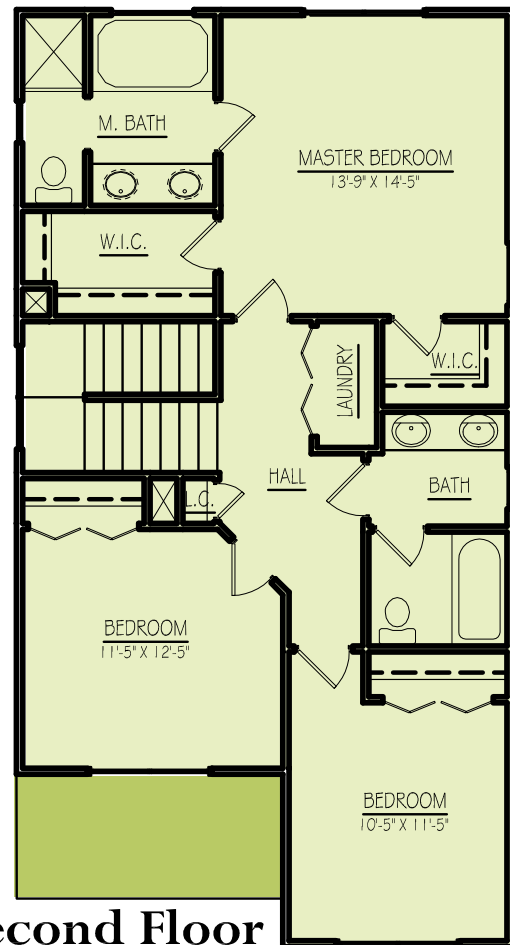
The Kensington model is a very traditional looking that home boasts an extremely spacious first level floor plan with a separate formal dining room which can also be used as a home office. The open floor plan makes it great for entertaining or family living including an island in the kitchen. All three bedrooms are located on the second floor including the spacious master bedroom with TWO walk in closets and master bathroom with dual sinks and large shower. This floorplan has a one car attached garage(not included in square footage).

(3) Bedroom
(2-1/2) Bath

FIRST FLOOR - 734 S/F
SECOND FLOOR - 908 S/F
TOTAL HEATED S.F. - 1,642 S/F
GARAGE - 222 S/F



First Floor



Second Floor

For more information visit www.CarriageHillLanding.com

The renderings, specifications, features and descriptions provided herein, although based on careful planning, engineering and architectural study, are subject to change. The developer reserves the right to alter and amend the same without notice or obligation.